



For Questions and Ordering

**Call: 1-888-272-4100**

E-mail: [Info@ArchitectsNW.com](mailto:Info@ArchitectsNW.com)

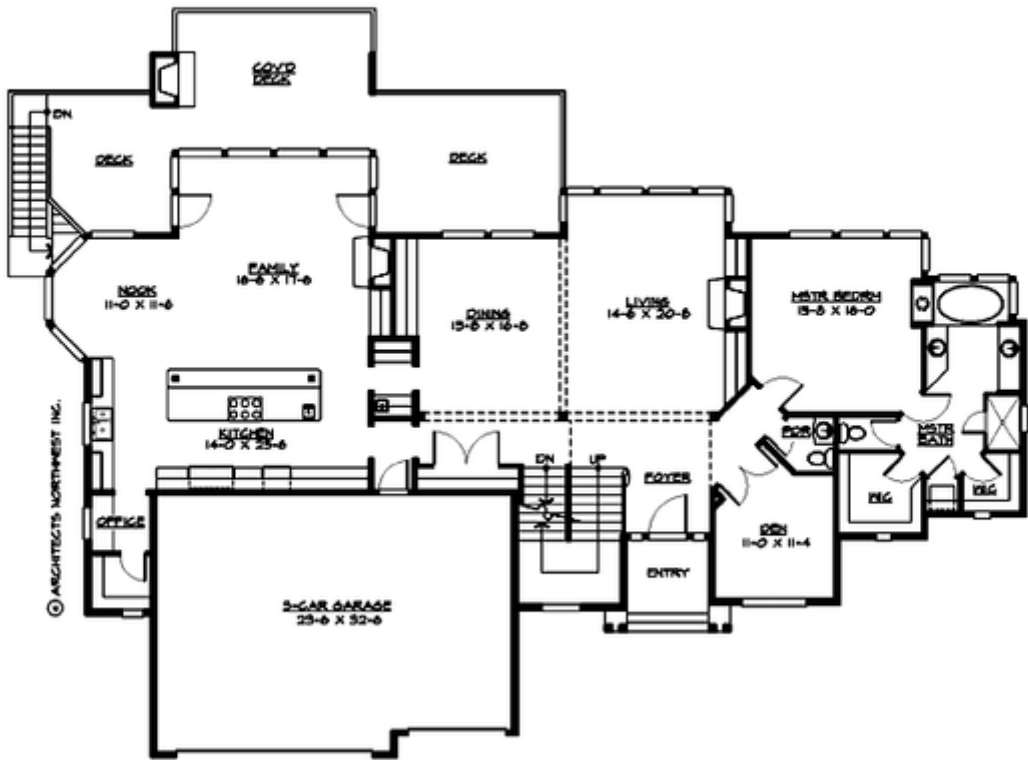
## **EASTPOINTE - R5367A3F-0DB**

Total Area: **5367 Sq. Ft.**  
Garage Area: **771 Sq. Ft.**  
Garage Size: **3**  
Stories: **3**  
Bedrooms : **4**  
Full Baths : **4**  
Half Baths : **1**  
Width : **93'-0"**  
Depth : **69'-0"**  
Height : **23'-0"**  
Foundation : **Basement**



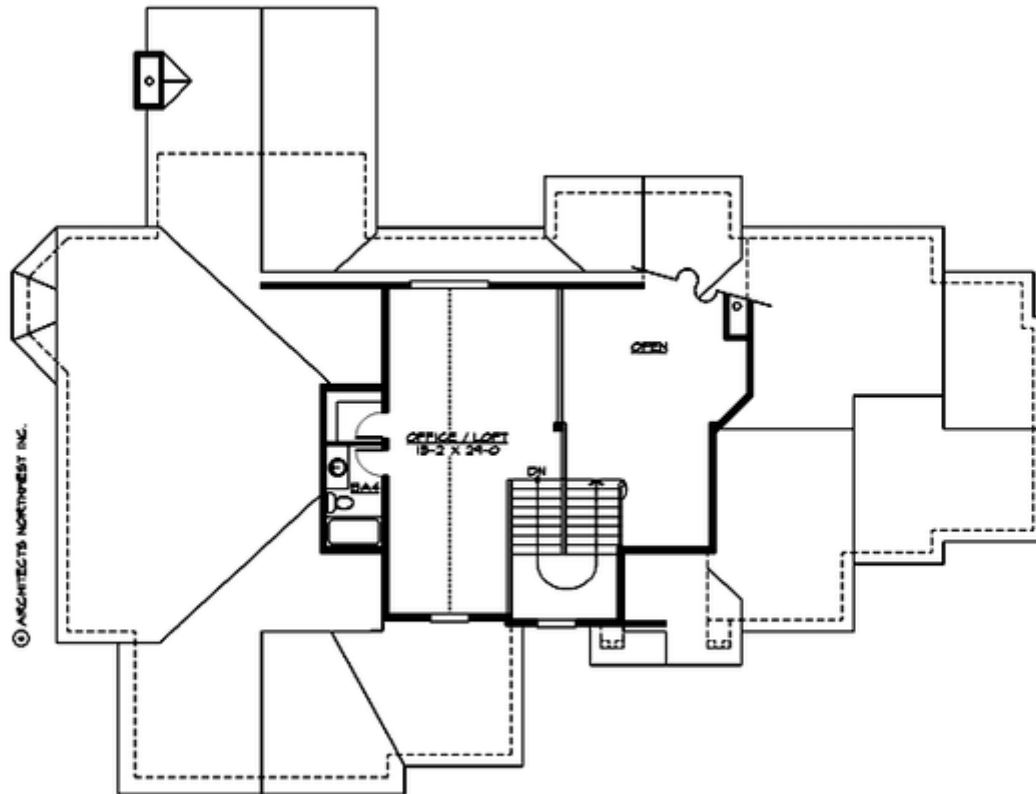
# EASTPOINTE - R5367A3F-0DB

## MAIN FLOOR



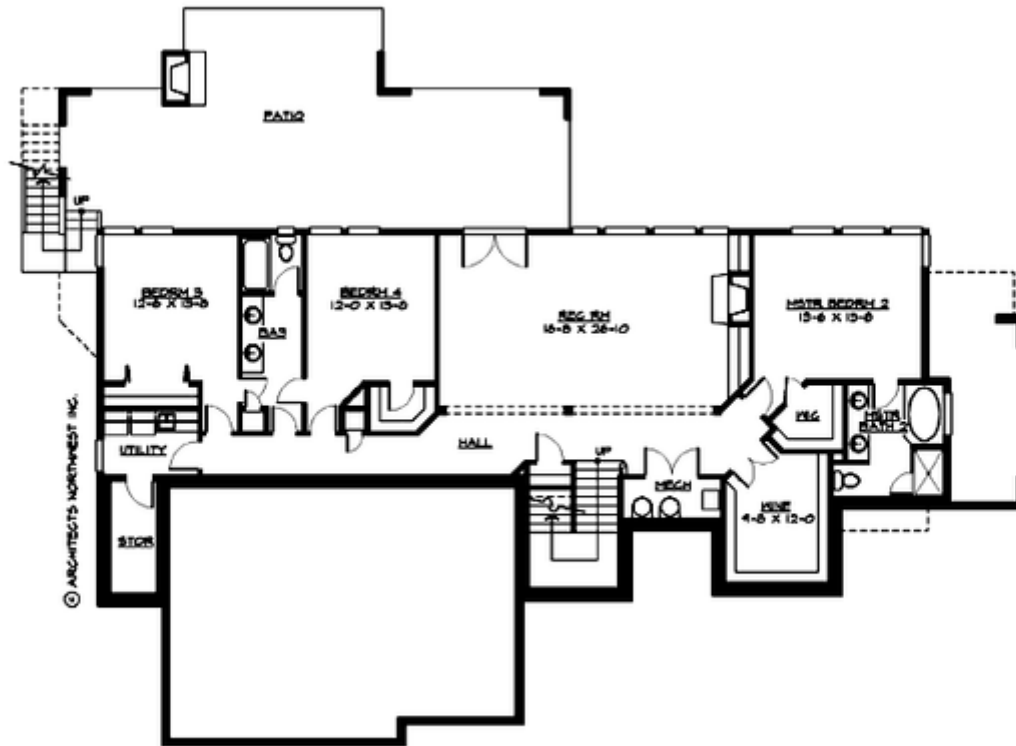
# EASTPOINTE - R5367A3F-0DB

## UPPER FLOOR



# EASTPOINTE - R5367A3F-0DB

## LOWER FLOOR



# EASTPOINTE - R5367A3F-0DB

## PLAN DETAILS

### Area Summary

Total Area:	<b>5367 Sq. Ft.</b>
Main Floor:	<b>2636 Sq. Ft.</b>
Upper Floor:	<b>507 Sq. Ft.</b>
Lower Floor:	<b>2224 Sq. Ft.</b>
Garage Floor:	<b>771 Sq. Ft.</b>

### General Information

Stories:	<b>3</b>
Width:	<b>93`-0"</b>
Depth:	<b>69`-0"</b>
Height:	<b>23`-0"</b>

### Architectural Style

Craftsman  
Hampton  
Shingle

### Number of Rooms

Bedrooms:	<b>4</b>
Full Baths:	<b>4</b>
Half Baths:	<b>1</b>

### Garage

Garage Size:	<b>3</b>
Garage Door Location:	<b>Front</b>

### Roof Pitches

Primary:	<b>6:12</b>
----------	-------------

### Wall Heights

Main:	<b>9-0"</b>
Upper:	<b>7-0"</b>
Lower:	<b>10-0"</b>

### Foundation Type

Daylight Basement

### Roof Framing

Combination

### Floor Load

Live (lbs):	<b>40 PSF</b>
Dead (lbs):	<b>10 PSF</b>

### Roof Load

Live (lbs):	<b>25 PSF</b>
Dead (lbs):	<b>15 PSF</b>
Wind:	<b>85 MPH</b>

### Design Features

- Bonus Space @ , Upper & Lower Floor
- Den/Office
- Great Room
- Laundry Room @ & Lower Floor
- Master Bedroom @ Main Floor Rear
- Craftsman House Plans
- Hampton House Plans
- Shingle House Plans
- View Lot (Rear) Plans