



For Questions and Ordering

**Call: 1-888-272-4100**

E-mail: [Info@ArchitectsNW.com](mailto:Info@ArchitectsNW.com)

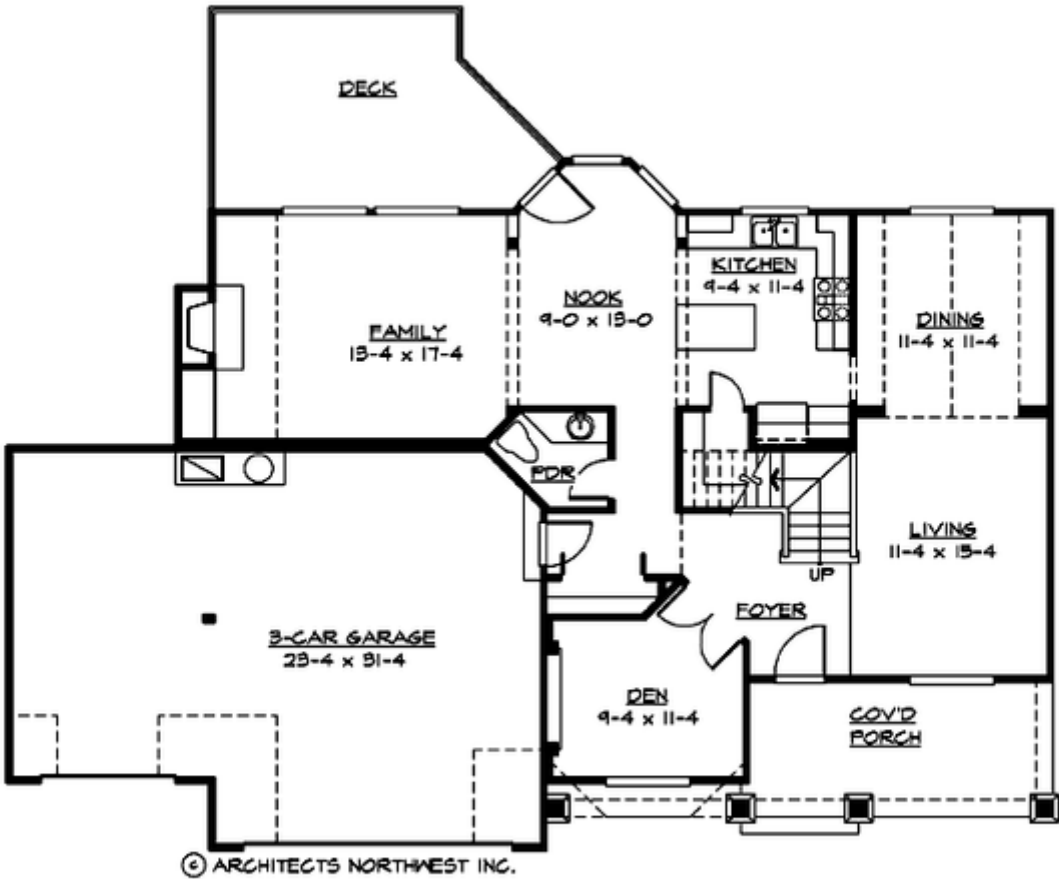
## **CAMDEN PARK - M2535B3F-0DB**

Total Area: **3745 Sq. Ft.**  
Garage Area: **705 Sq. Ft.**  
Garage Size: **3**  
Stories: **3**  
Bedrooms : **3**  
Full Baths : **2**  
Half Baths : **1**  
Width : **62'-0"**  
Depth : **41'-0"**  
Height : **28'-0"**  
Foundation : **Basement**



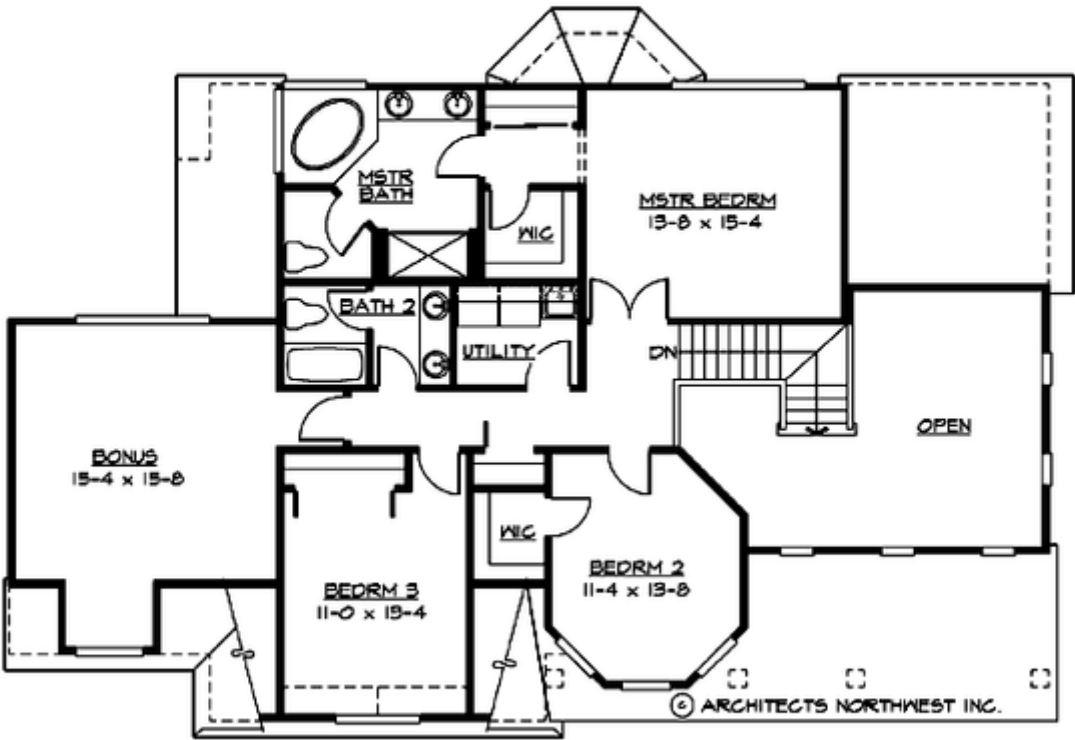
CAMDEN PARK - M2535B3F-0DB

MAIN FLOOR



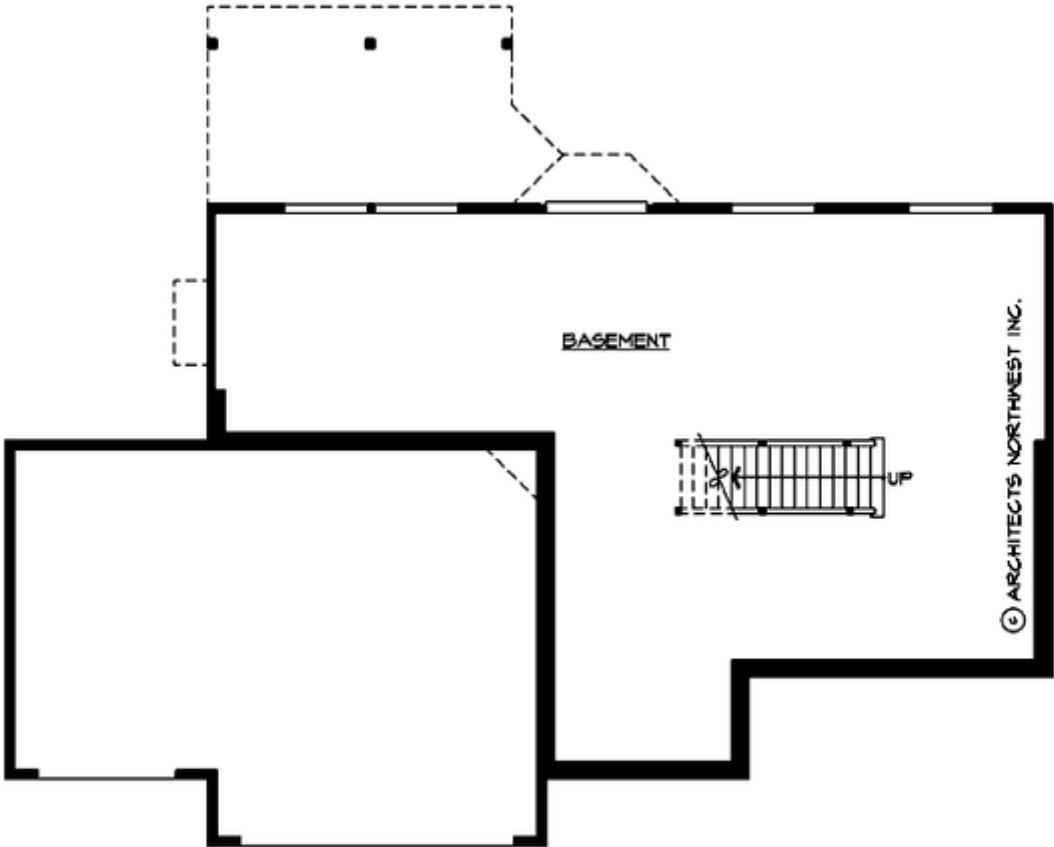
CAMDEN PARK - M2535B3F-0DB

UPPER FLOOR



CAMDEN PARK - M2535B3F-0DB

LOWER FLOOR



# CAMDEN PARK - M2535B3F-0DB

## PLAN DETAILS

### Area Summary

Total Area:	3745 Sq. Ft.
Main Floor:	1235 Sq. Ft.
Upper Floor:	1325 Sq. Ft.
Lower Floor:	1185 Sq. Ft.
Garage Floor:	705 Sq. Ft.

### General Information

Stories:	3
Width:	62`-0"
Depth:	41`-0"
Height:	28`-0"

### Architectural Style

Cape Cod  
Farmhouse  
Hampton

### Number of Rooms

Bedrooms:	3
Full Baths:	2
Half Baths:	1

### Garage

Garage Size:	3
Garage Door Location:	Front

### Roof Pitches

Primary:	8:12
Secondary:	4:12

### Wall Heights

Main:	9-0"
Upper:	8-0"
Lower:	9-0"

### Foundation Type

Daylight Basement

### Roof Framing

Trusses

### Floor Load

Live (lbs):	40 PSF
Dead (lbs):	10 PSF

### Roof Load

Live (lbs):	25 PSF
Dead (lbs):	15 PSF
Wind:	85 MPH

### Design Features

- Bonus Space @ , Upper & Lower Floor
- Den/Office
- Front Porch
- Great Room
- Laundry Room @ & Upper Floor
- Master Bedroom @ Upper Floor Rear
- Cape Cod House Plans
- Farmhouse Home Plans
- Hampton House Plans
- View Lot (Rear) Plans